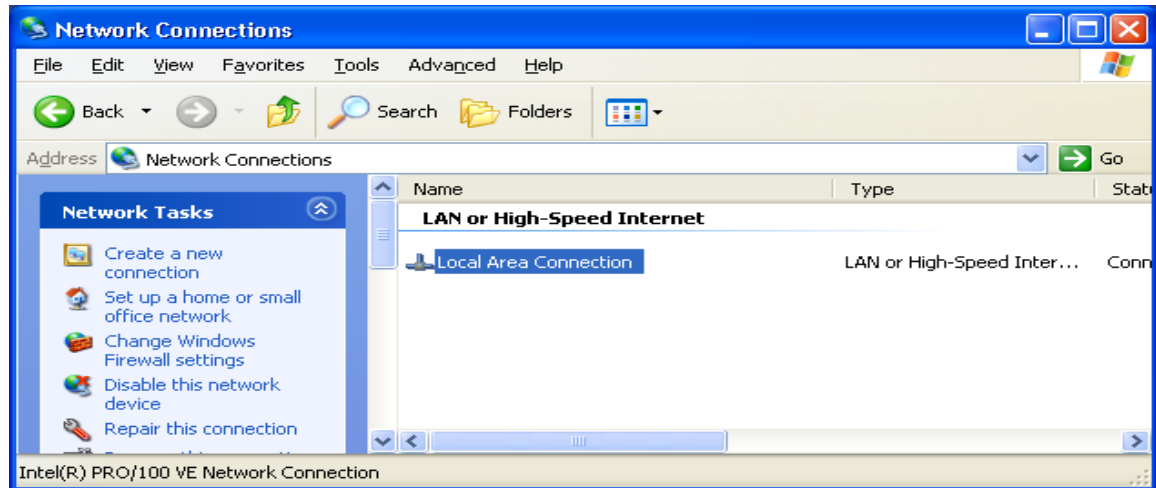


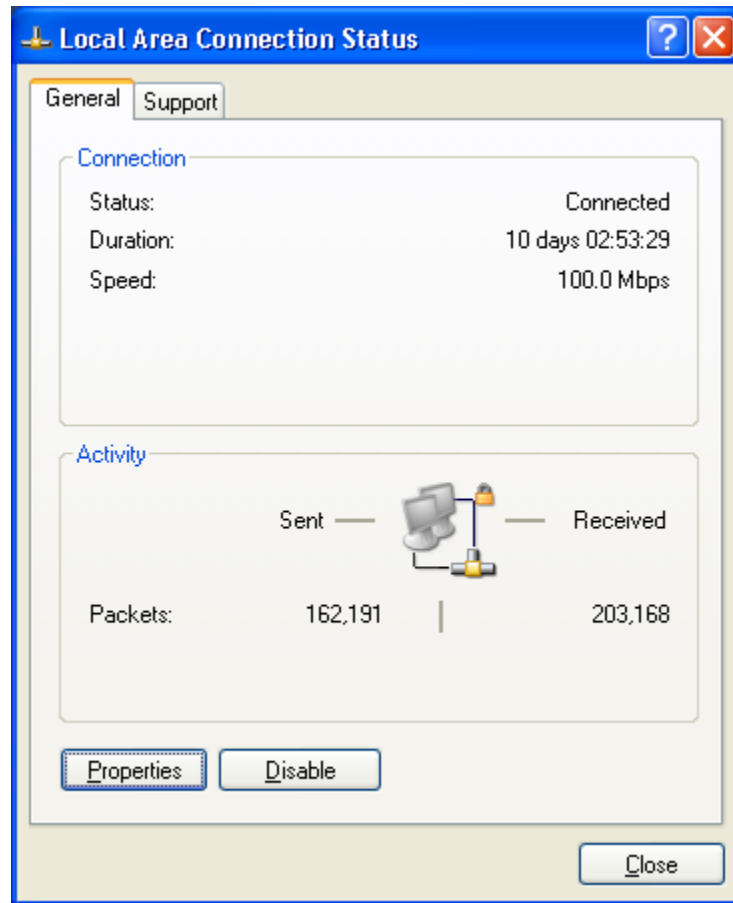
Connecting to a GDP via the LAN from WindowsXP PRO

The GDP-32 offers the convenience of transferring files over the Local Area Network. This facilitates transferring Time Series data files, as well as the Data Cache, and allows for upgraded program files to be easily placed onto the GDP.

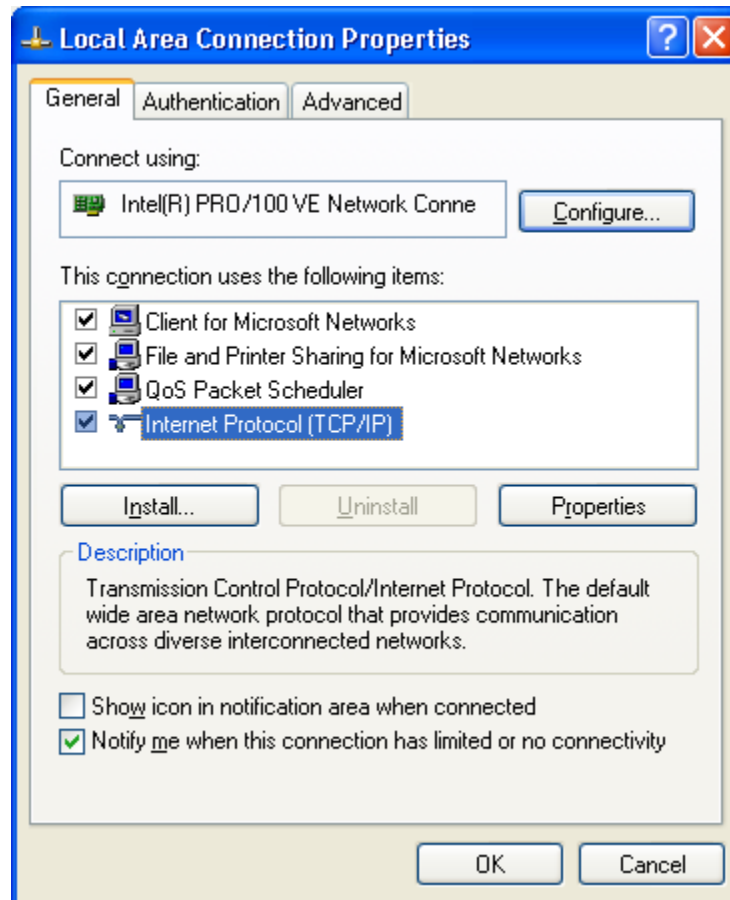
1. From Control Panel, click on Network Connections. Then double-click on Local Area Connection.



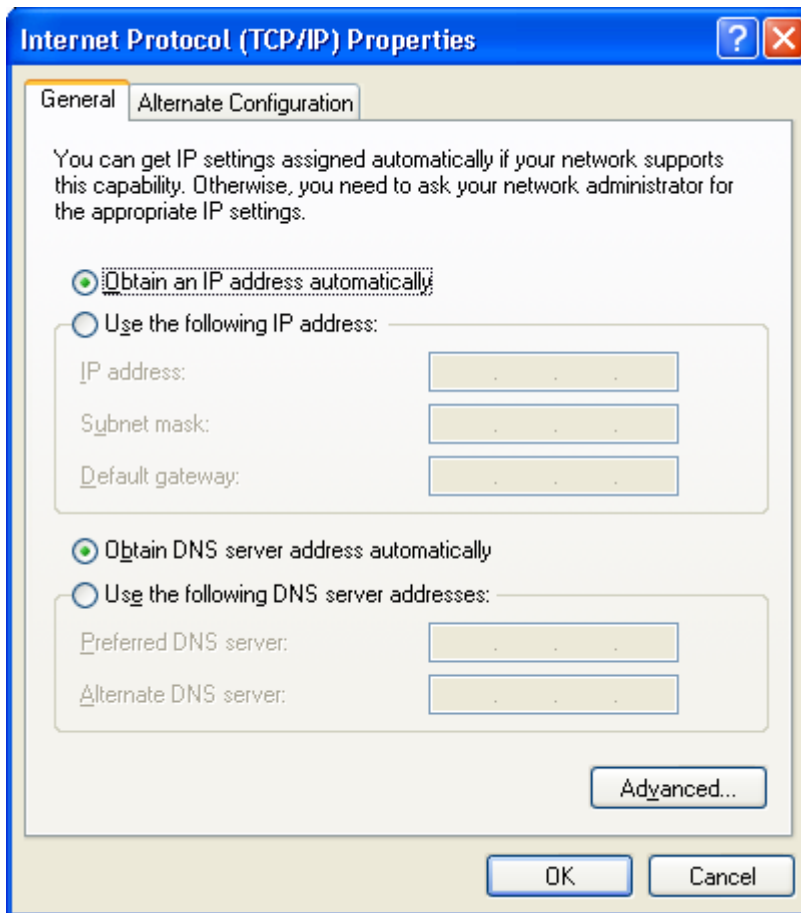
2. Click "Properties".



3. Double-click “Internet Protocol (TCP/IP)”.



4. If the “Obtain an IP address automatically” button is green as shown above, do not change it. Instead, click on “**Alternate Configuration**” and skip to step 5.



If there is an IP address here which has the first three numbers: 192.168.1.xxx (xxx can be anything) – **Then the computer is already set up correctly and you can exit back out of everything.**

If there are any other numbers already here, they will need to be changed. Be sure to write down the current numbers for the “IP address” and the “Subnet mask” so they can be replaced later. Now change the “IP address” to 192.168.1.2, and the “Subnet mask” to 255.255.255.0 – Nothing else should have to change. Now click “OK” and the laptop should be set up properly.

Skip to step 6.

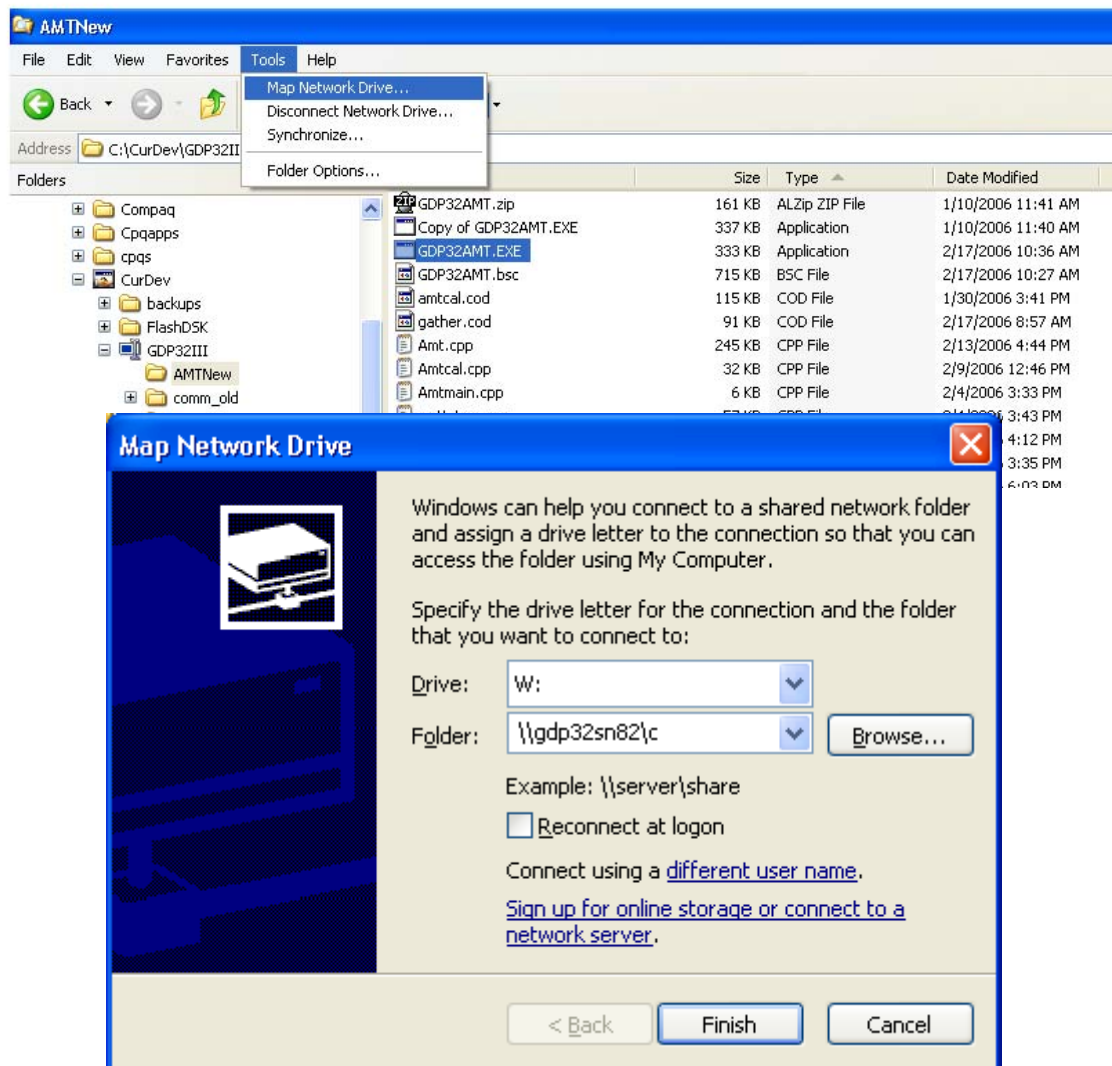
5. Fill in as shown, and click OK.

The image shows a screenshot of the "Internet Protocol (TCP/IP) Properties" dialog box. The "Alternate Configuration" tab is active. The "User configured" radio button is selected. The IP address is set to 192.168.1.2, and the Subnet mask is set to 255.255.255.0. The other fields (Default gateway, Preferred DNS server, Alternate DNS server, Preferred WINS server, and Alternate WINS server) are empty. The dialog box has "OK" and "Cancel" buttons at the bottom right.

Field	Value
IP address:	192 . 168 . 1 . 2
Subnet mask:	255 . 255 . 255 . 0
Default gateway:	. . .
Preferred DNS server:	. . .
Alternate DNS server:	. . .
Preferred WINS server:	. . .
Alternate WINS server:	. . .

6. Now press the Network Button (F2) on the GDP.

Next, map a drive from the computer to the GDP as shown:



Type in the GDP drive as shown: “\\gdp32sn##\c”, where ## is the serial number of the front panel. Then click Finish.

Now from Windows Explorer you will click on drive W: to access the GDP.

NOTES:

- 1) The network connection to the GDP must be a crossover cable. This is the blue cable supplied by Zonge (PN: CROSS).
- 2) Program files and the data cache files are stored on the c: drive of the GDP. Time series data is stored in the C:\DATA folder of the GDP.
- 3) A firewall on the Laptop may not allow network communication with the GDP. Any firewall should be disabled while connected directly to the GDP, if the connection is not working.